

# DICKINSON

Dickinson Roundell Inc  
980 Madison Avenue  
New York, NY 10075  
Tel: (212) 772 8083  
Fax: (212) 772 8186  
simondickinson.com

## SUMMER EXHIBITION

### 1. Lygia CLARK (1920 – 1988)

*Bicho Linear*, 1960

hinged aluminium plates  
17 <sup>3</sup>/<sub>4</sub> x 26 <sup>3</sup>/<sub>4</sub> x 18 in. (45 x 68x 46 cm.)



### 2. Dan COLEN (b. 1979)

*In the ketchup*, 2014

gum on canvas  
71 x 56 in. (180 x 142 cm.)



### 3. Martin KIPPENBERGER (1953 – 1997)

*Das Ende des Alphabets (Prototype for the Edition)*, 1989

inflatable rubber on wood; cork on wood; acrylic on wood;  
together with bicycle pump  
three parts, approx. 31½ x 30½ x 7¾ in. (80 x 80 x 20 cm.)  
each

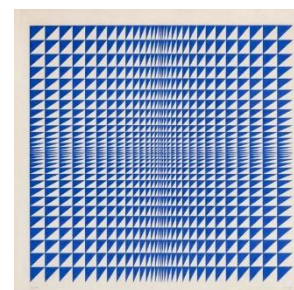
In an edition of 7 plus three Artist's proofs; this work the  
Artist's prototype



### 4. Luiz SACILOTTO (1924 – 2003)

*GUA 0243*, 1979

gouache on paper  
26 x 26 in. (66 x 66 cm.)



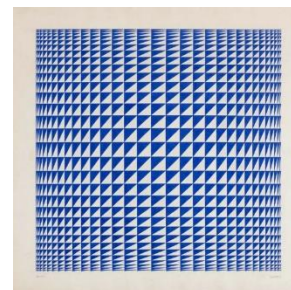
# D I C K I N S O N

Dickinson Roundell Inc  
980 Madison Avenue  
New York, NY 10075  
Tel: (212) 772 8083  
Fax: (212) 772 8186  
simondickinson.com

## 5. Luiz SACILOTTO (1924 – 2003)

*GUA 0244*, 1979

gouache on paper  
26 x 26 in. (66 x 66 cm.)



## 6. Mira SCHENDEL (1919 – 1999)

*Sem título (Dec. 1960)*, 1960

signed on the reverse *Mira*  
oil on canvas  
39 3/8 x 27 1/2 in. (100 x 70 cm.)



## 7. Alfredo VOLPI (1896 – 1988)

*Elementos de fachada (Dec. 1960)*, 1960

signed verso A. Volpi  
gouache on canvas  
33 7/8 x 23 5/8 in. (86 x 60 cm.)



## 8. Joseph CORNELL (1903 – 1972)

*Untitled (Compartmented Dovecote)*, 1958

signed verso *Joseph Cornell*  
wooden box and plaster  
17 x 10 1/4 x 2 3/8 in. (43.2 x 26 x 6 cm.)



# DICKINSON

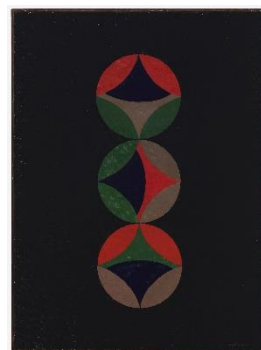
Dickinson Roundell Inc  
980 Madison Avenue  
New York, NY 10075  
Tel: (212) 772 8083  
Fax: (212) 772 8186  
simondickinson.com

## 9. Judith LAUAND (b. 1922)

*Sem Titulo*, 1964

oil on canvas

28  $\frac{3}{4}$  x 21  $\frac{1}{5}$  in. (73 x 54 cm.)



## 10. Ed RUSCHA (b. 1937)

*F-Future*, 2000

signed and dated lower right *Ed Ruscha 2000*

acrylic and ink on paper

17  $\frac{7}{8}$  x 11  $\frac{1}{8}$  in. (45.4 x 28.2 cm.)



## 11. Luiz SACILOTTO (1924 – 2003)

*Concreção 8340*, 1983

signed lower center *Sacilotto*

vinyl, tempera and graphite on canvas; a diamond

40  $\frac{1}{8}$  x 40  $\frac{1}{8}$  in. (102 x 102 cm.)

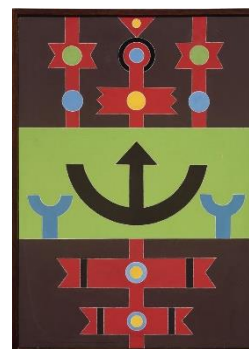


## 12. Rubem VALENTIM (1922 – 1991)

*Relevo Emblema 85*, 1985

acrylic on canvas

19  $\frac{3}{4}$  x 13  $\frac{3}{4}$  x 2 in. (50 x 35 x 5 cm.)



# DICKINSON

Dickinson Roundell Inc  
980 Madison Avenue  
New York, NY 10075  
Tel: (212) 772 8083  
Fax: (212) 772 8186  
simondickinson.com

## 13. Victor MAGARIÑOS (1924 – 1993)

*Untitled*, c. 1950

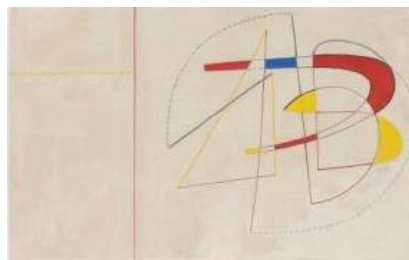
tempera on paper  
7 7/8 x 12 1/4 in. (20 x 31 cm.)



## 14. Victor MAGARIÑOS (1924 – 1993)

*Untitled*, c. 1950

tempera on paper  
7 7/8 x 12 1/4 in. (20 x 31 cm.)



## 15. Lygia PAPE (1927 - 2004)

*Sem Titulo (Serie Livro do Tempo)*, 1965

Acrylic and latex paint on wood  
19 5/8 x 19 5/8 x 4 1/8 in. (50 x 50 x 10.5 cm.)



## 16. Victoria GITMAN (b. 1972)

*A Beauty*, 2008

oil on board  
7 x 5 in. (17.8 x 12.7 cm.)

