

# DICKINSON

Dickinson Roundell Inc  
980 Madison Avenue  
New York, NY 10075  
Tel: (212) 772 8083  
Fax: (212) 772 8186  
simondickinson.com

## Endless Summer

**Joseph CORNELL (1903 – 1972)**

*Untitled (Requires blue glass), 1958*

signed verso, lower center *Joseph Cornell*  
mixed media collage; in the artist's original  
frame

5 x 7 1/8 in. (12.7 x 18 cm.)



**Richard DIEBENKORN (1922 – 1993)**

*Untitled, 1991*

signed with initials and dated, lower left *R.D.91*;  
signed and dated, verso *R. Diebenkorn 1991*  
acrylic, crayon, and graphite on paper, extended  
at the bottom

20 1/2 x 16 in. (52 x 40.5 cm.)

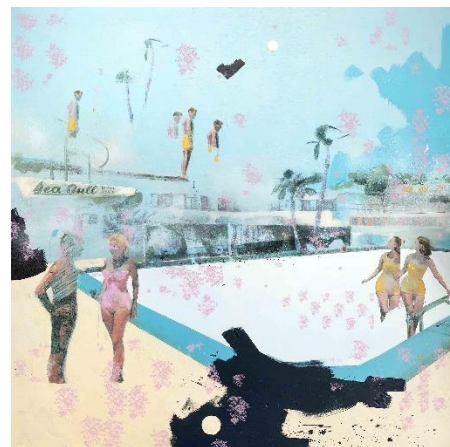


**Lizzie GILL (b. 1989)**

*High Dive, 2020*

acrylic, image transfer, collage and silkscreen on  
panel

36 x 36 in. (91 x 91 cm.)



# DICKINSON

Dickinson Roundell Inc  
980 Madison Avenue  
New York, NY 10075  
Tel: (212) 772 8083  
Fax: (212) 772 8186  
simondickinson.com

## Elsa HANSEN OLDHAM (b. 1986)

*Kikis*, 2020

signed and dated lower right *elsa '20*  
gold, silk and velvet hand embroidery on linen  
17 x 14 1/4 in. (43 x 36 cm.)



## Elsa HANSEN OLDHAM (b. 1986)

*Roy Lichtenstein and Calvin Klein*, 2017

signed with initials and dated lower right  
*EO2017KY*  
hand embroidery on linen  
framed: 17 1/2 x 20 1/2 in. (44.5 x 52 cm.)



## Keith HARING (1958 – 1990)

*Subway Drawing*, 1980-82

chalk on paper  
45 1/4 x 28 3/4 in. (115 x 73 cm.)



# D I C K I N S O N

Dickinson Roundell Inc  
980 Madison Avenue  
New York, NY 10075  
Tel: (212) 772 8083  
Fax: (212) 772 8186  
simondickinson.com

**Clinton KING (b. 1976)**

*Neon Goth*, 2020

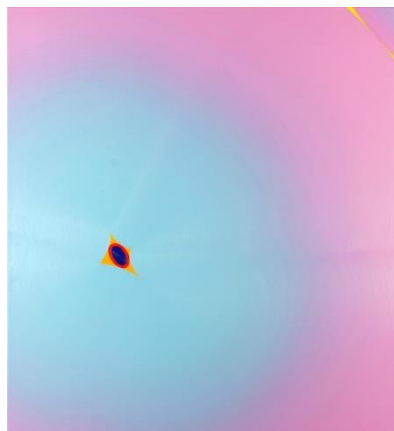
acrylic on linen  
65 x 40 in. (165 x 101.5 cm.)



**Osamu KOBAYASHI (b. 1964)**

*All Seeing*, 2019

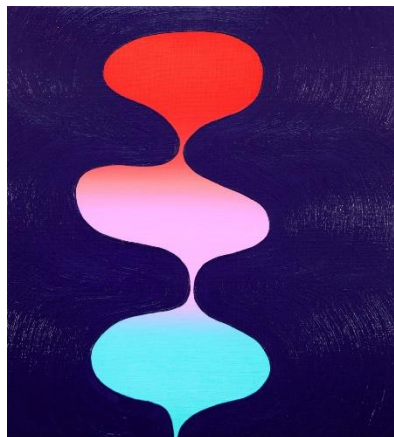
oil on canvas  
48 x 40 in. (122 x 101.5 cm.)



**Osamu KOBAYASHI (b. 1964)**

*Wildflower II*, 2020

oil on linen  
12 x 11 in. (30.5 x 28 cm.)



# DICKINSON

Dickinson Roundell Inc  
980 Madison Avenue  
New York, NY 10075  
Tel: (212) 772 8083  
Fax: (212) 772 8186  
simondickinson.com

**Marilyn MINTER (b. 1948)**

*Blue Tears*, 2004

C-print  
50 x 36 in. (127 x 91.5 cm.)  
Ed. 5/5, plus 2 Artist's Proofs



**Milena MUZQUIZ (b. 1972)**

*Untitled*, 2020

oil on canvas  
68 x 64 in. (172.8 x 162.5 cm.)



**Milena MUZQUIZ (b. 1972)**

*Untitled*, 2017

oil on canvas  
29 x 23 1/2 in. (73.7 x 59.7 cm.)



# DICKINSON

Dickinson Roundell Inc  
980 Madison Avenue  
New York, NY 10075  
Tel: (212) 772 8083  
Fax: (212) 772 8186  
simondickinson.com

## **OKS (Oksana Todorova)**

*Liquor Store Bag*, 2019

glazed porcelain, luster  
11 <sup>3</sup>/<sub>4</sub> x 9 x 7 <sup>1</sup>/<sub>2</sub> in. (30 x 23 x 19 cm.)



## **OKS (Oksana Todorova)**

*Dom Perignon Rosé*, 2018

porcelain, underglaze, glaze  
bottle: 5 x 6 x 12 in. (12.7 x 15.2 x 30.5 cm.)  
cup: 2 <sup>1</sup>/<sub>2</sub> x 4 <sup>1</sup>/<sub>2</sub> x 3 in. (6.3 x 11.5 x 7.6 cm.)



## **Freddy RODRÍGUEZ (b. 1945)**

*Untitled*, 1971

signed and dated verso upper left, *Freddy Rodriguez 1971*; and titled, dated again, and inscribed verso upper right, *Untitled, 1971, 48 x 54*

acrylic on canvas  
48 x 54 in. (121.9 x 137.2 cm.)

