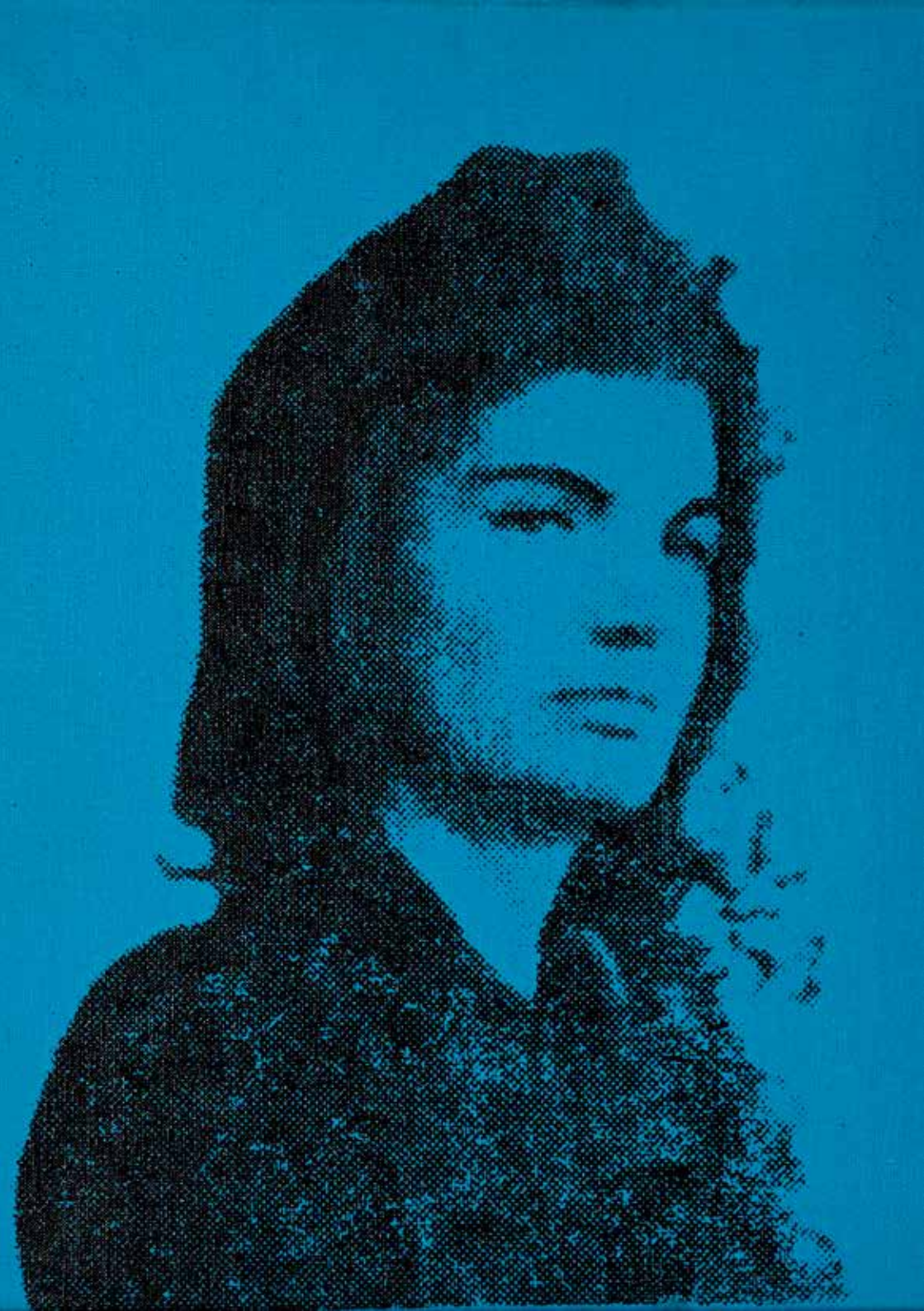


# THE MODERN MUSE

DICKINSON

TEFAF NEW YORK SPRING 2018



For TEFAF New York Spring 2018, which takes place at the Park Avenue Armory from 4-8 May, Dickinson will present *The Modern Muse*, featuring a superb range of 20th century works by some of the most significant contributors to Modern and Contemporary Art.

The exhibition will be led by Pablo Picasso's *Tête de femme (Jacqueline)*, a portrait of his second wife Jacqueline, his muse and constant companion during the final two decades of his life. The role of the muse was vital to Picasso's art, and instrumental in the realisation of many of his greatest masterpieces. We will show four muse portraits by Picasso at TEFAF. *Tête de femme (Jacqueline)*, one of two works dated May 3rd, 1963, belonged first to Picasso's long-term dealer Daniel-Henry Kahnweiler. It was purchased 51 years ago by the present owner's family from Heinz Berggruen, the German-Jewish collector and dealer who befriended many of the titans of 20th century art. Jacqueline is also the inspiration for Picasso's Egyptian-inspired ink drawing *Personnage de profil (Jacqueline)* from 1960; while two of his earlier loves, Dora Maar and Françoise Gilot, are captured in the drawings *Tête de femme* (1943) and *Portrait de Françoise* (1946).

Picasso's friend and rival Henri Matisse executed the elegant large-scale charcoal drawing *Étude pour figure décorative sur fond ornemental* (1925-26), which references his widely-admired *odalisques*. We will also exhibit Chaim Soutine's *La Femme accoudée*, which depicts his companion Gerda Groth in a pensive pose, and was painted circa 1937. And two works by Wilfredo Lam from 1936 and circa 1942 draw on Picasso's Cubism, Surrealism, and on the artist's own Cuban heritage. From the second half of the 20th century we will show a group of sketches and highly-worked charcoal studies by the Abstract Expressionist Willem de Kooning, which relate to his *Woman* series, and which were highly influenced by Picasso's innovations; and a 1964 *Jackie* by Andy Warhol, from his iconic series representing the First Lady.

2018 marks not only Dickinson Gallery's 25th anniversary, but also the 20th year Dickinson has participated in TEFAF fairs. We look forward to welcoming visitors to this year's presentation.





ENRICO BAJ (1924 – 2003)

*La Dame*, 1961

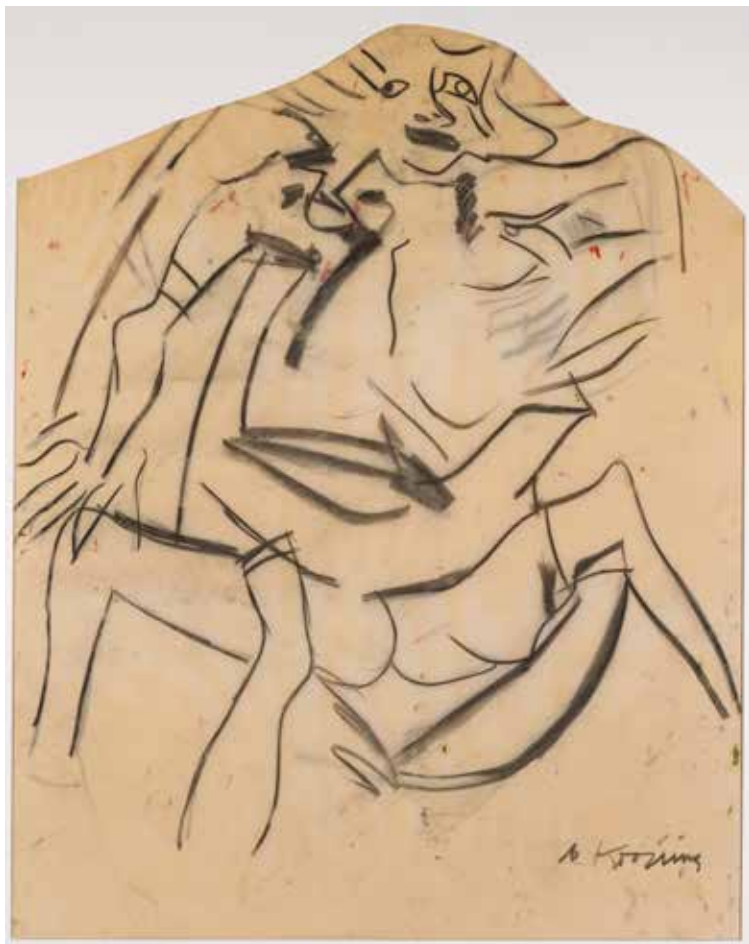
signed upper left *baj*  
mixed media on canvas  
92 x 73 cm. (36 ¼ x 28 ¾ in.)



SALVADOR DALÍ (1904 – 1989)

*Anatomies-Série-Décalcomanie*, c. 1937

signed and dated lower centre *Dalí 1937*  
oil on board laid down on cradled panel  
50 x 64 cm. (19 ¾ x 25 ¼ in.)



WILLEM DE KOONING (1904 – 1997)

*Untitled*, c. 1964-65

signed lower right *de Kooning*  
charcoal on vellum

114 x 90 cm. (44  $\frac{4}{5}$  x 35  $\frac{3}{5}$  in.)

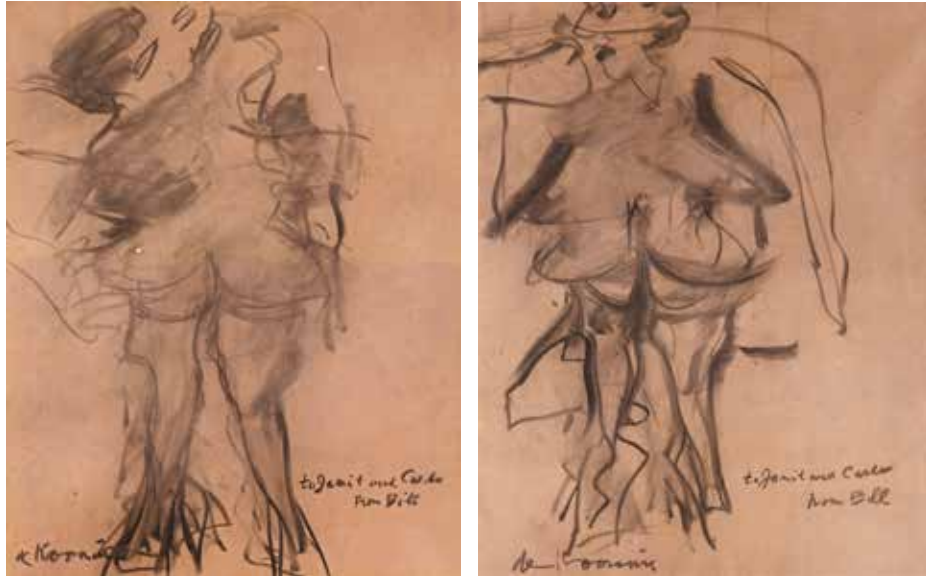


WILLEM DE KOONING (1904 – 1997)

*Seated Woman*, 1969

signed, dated, numbered and inscribed *de Kooning 5C. 9/9 © 1969/80*; and stamped lower verso with the Tallix Foundry mark  
bronze, edition of 9 and 2 artist's proofs cast in 1980 (this is no. 9/9)

67.3 x 91.4 x 53.3 cm. (26  $\frac{3}{4}$  x 39 x 21 in.)



WILLEM DE KOONING (1904 – 1997)

*Untitled (Figures): A Pair of Drawings, 1954*

each signed lower left *de Kooning*; and further inscribed  
to *Janit and Carlo from Bill*  
charcoal on paper laid on canvas  
49.5 x 61.5 cm. (24 ¼ x 19 ½ in.) each



WILLEM DE KOONING  
(1904 – 1997)

*Untitled (Sketches of Women), c. 1955*

signed lower right *de Kooning*; variously inscribed  
*Max Roger (?)*; *fifteen*; and  
*Mrs. Lloyd*  
pencil and pastel on paper  
60 x 47 cm. (23 ⅝ x 18 ½ in.)



WILLEM DE KOONING (1904  
– 1997)

*Untitled (Woman), c. 1950-53*

inscribed lower left *souvenir  
to Paul from Bill de Kooning*  
pencil and pastel on tracing  
paper  
60 x 47 cm. (23 ⅝ x 18 ½ in.)





WILLEM DE KOONING (1904 – 1997)

*Untitled (Figure), c. 1970*

oil on paper mounted on canvas  
104.8 x 75.6 cm. (41 ¼ x 29 ¾ in.)



WILFREDO LAM (1902 – 1982)

*Figures*, 1936

gouache on paper laid down on canvas-board  
107 x 127 cm. (42 ½ x 50 in.)



WILFREDO LAM (1902 – 1982)

*Sans titre*, c. 1942

gouache on paper laid down on board  
106.7 x 81.3 cm. (42 x 32 in.)





JOAN MIRÓ (1893 – 1983)

*Femme*, 5 Sept. 1973

signed lower right *Miró*; signed, titled and dated verso  
*Miro 5/IX/73 Femme*  
 gouache, watercolour and ink on paper  
 88.5 x 65 cm. (34 ¾ x 25 ½ in.)



HENRI MATISSE (1869 – 1954)

*Étude pour figure décorative sur fond ornemental*, c.  
 1925-26

signed and dated lower left *Henri Matisse 1927*  
 charcoal on paper  
 63 x 48.2 cm. (24 ⅝ x 19 in.)



HENRY MOORE, O.M.C.H. (1898 – 1986)

*Reclining Figures*, 1943

signed and dated lower left *Moore 43*  
pencil, charcoal, wax crayons, pen, ink & wash on paper  
45.6 x 64.7 cm. (18 x 25 ½ in.)



HENRY MOORE, O.M.C.H. (1898 – 1986)

*Maquette for 'Curved Mother and Child'*, 1980

signed and numbered on base *Moore 8/9*  
bronze, from an edition of 9  
excluding the base: 18.5 x 9.0 x 8.4 cm. (7¼ x 3½ x 3¼ in.)



PABLO PICASSO (1881 – 1973)

*Tête de femme (Jacqueline)*, 24 May 1963

signed and dated lower left *24.5./63./Picasso*; dated verso *24.5.63 II*; and inscribed on the stretcher with the initial *K*  
oil on canvas  
81 x 54 cm. (32 x 21 ¼ in.)



PABLO PICASSO (1881 – 1973)

*Personnage de profil (Jacqueline)*, 1960

signed, dated and inscribed upper left *Pour Henri Matarasso /son ami Picasso/le 13.12.60*  
ink on buff paper  
35 x 25 cm. (13 2/3 x 9 ¾ in.)









PABLO PICASSO (1881 – 1973)

*Portrait de Françoise, 1946*

dated upper left *Lundi 29 Avl.46*  
pencil on paper  
66 x 50.8 cm. (26 x 20 in.)



PABLO PICASSO (1881 – 1973)

*Tête de femme (Portrait de Dora Maar), 7 Feb. 1943*

signed lower right *Picasso* and dated lower left *7 F 43*  
gouache and mixed media  
65 x 50 cm (25.6 x 19.7 in.)

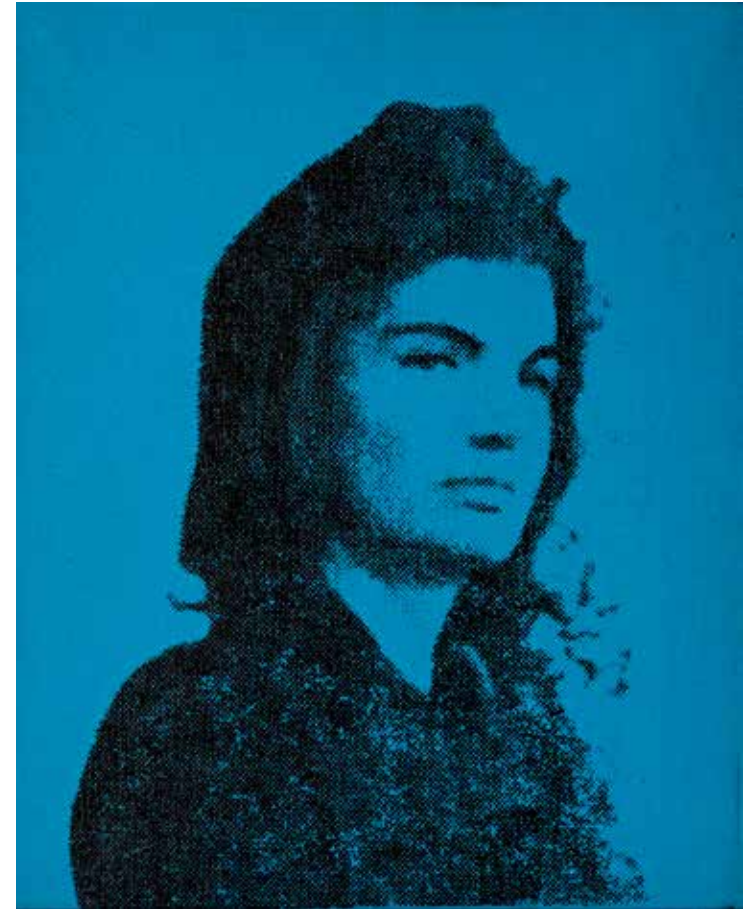




CHAÏM SOUTINE (1893 – 1943)

*La Femme Accoudée*, c. 1937

signed lower right *C. Soutine*  
oil on canvas  
41 x 33 cm. (16 1/8 x 13 in.)



ANDY WARHOL (1928 – 1987)

*Jackie*, 1964

signed and dated verso *Andy Warhol 64*  
acrylic and silkscreen on canvas  
50.8 x 40.6 cm. (20 x 16 in.)



TOM WESSELMANN (1931 – 2004)

*Study for 'Nude Lying on the Beach', 1965*

signed and dated lower right *Tom Wesselmann 65*; and  
inscribed, verso *D65135 Study for Nude Lying on the Beach*  
*Crayon on paper 1965 8 x 11*  
graphite and wax crayon on paper  
20.6 x 27.9 cm. (8 x 11 in.)

All works of art illustrated in this catalogue are offered for sale at TEFAF New York Spring, 04-08.05.2018 at the  
Park Avenue Armory, 643 Park Avenue New York, 10065 NY. © Simon C Dickinson Ltd.





